

# CURIOUS TIMES WEEKLY

Age Appropriate News

School News

Events and Achievements

## The Intriguing Case of the Missing Focus



Dr. Anika Sharma, esteemed for her astute intellect and serene demeanor, sat in her meticulously arranged study. She was joined by Mrs. Verma, a woman laden with concern, perched on a simple wooden chair. "Dr. Sharma," Mrs. Verma began with a tone of desperation, "I'm struggling to focus. With the children playing, constant phone notifications, and daily chores awaiting, my mind feels like a pressure cooker." Understanding Mrs. Verma's plight, Dr. Sharma likened her situation to a bustling marketplace, where myriad demands compete for attention. Using a vibrant Rangoli pattern as an analogy, she explained the need to create space amidst life's complexities to discern the essential.

Delving deeper, Dr. Sharma unearthed underlying anxieties within Mrs. Verma – concerns about her children's exams, the pressure of maintaining a perfect household, and doubts about personal fulfillment. A subtle change in demeanor revealed a deeper issue – Mrs. Verma's daughter, Priya, succumbing to social media's unrealistic standards, affecting her studies and well-being. Recognizing the power of mindful awareness, Dr. Sharma introduced simple breathing exercises and mindfulness techniques to Mrs. Verma. Together, they devised strategies to prioritize tasks, designate focused work areas, and carve out digital-free times. Similar guidance was extended to Priya, emphasizing self-compassion against social media's allure.

With practice, Mrs. Verma regained control over her surroundings, while Priya learned to navigate social media's pitfalls. Yet, inner distractions and self-doubt lingered. Dr. Sharma guided Mrs. Verma to observe these thoughts without judgment, fostering agency and resilience. In their final session, Dr. Sharma emphasized that focus is honed through practice and self-compassion. The journey of Mrs. Verma and Priya underscores the universal quest for focus amidst distractions, urging mindfulness and well-being prioritization.

## WHAT'S INSIDE?

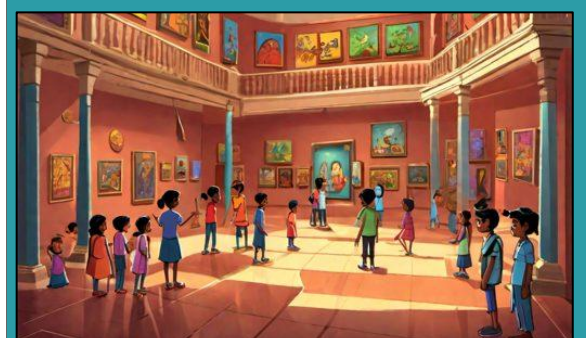
Jupiter has the most moons!



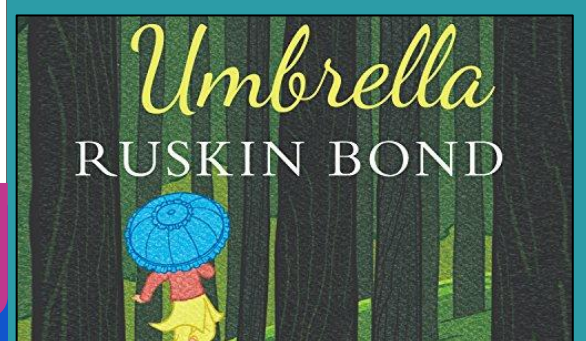
Dolphins Sense Electricity, Researchers Reveal



Inspiring Mumbai Museum Enchants Young Minds



Exploring Childhood: Ruskin Bond's Blue Umbrella



Discover Himachal India: Last Village Mystique



**& much more..**

DO NOT MISS THE AMAZING STORIES, VIDEOS AND ART FROM BUDDING WRITERS, SCIENTISTS AND ARTISTS ON MY EXPRESSIONS, JOKESPOKE, WORD OF THE DAY, TONGUE TWISTER, QUOTES AND FUN FACTS. CHECK OUT OUR EVENTS

## STUDENT NEWS REPORTER

### Become a Student News Reporter

- CURRENT AFFAIRS
- SPORTS & ENTERTAINMENT NEWS
- SCIENCE & TECH NEWS
- SPACE & DISCOVERIES
- LOCAL & SCHOOL NEWS

Do not miss your opportunity, check all the details on! [CURIoustimes.in/ME](https://www.curious-times.in/me)

**CURIoustimes.in**



**SCHOOLS PARTICIPATE NOW!**

**STUDENTS PARTICIPATE HERE!**



# CURIOUS TIMES WEEKLY

Age Appropriate News

School News

Events and Achievements

## AVID NEWS READERS

### Jupiter has the most moons!



Image Credit :NASA

With the discovery of 12 additional moons, Jupiter is the planet with the most moons in the solar system. According to astronomers, Jupiter is the new “moon master” of the solar system.

Jupiter is the largest and most massive planet in the solar system. Furthermore, the gas giant also boasts the largest number of moons orbiting it. Scientists discovered another 12 moons, bringing Jupiter’s total up to 92 moons.

Of 12 new moons, nine of them are exceptionally far away. Thus these nine moons have orbits that are longer than 550 days. Also, these moons are all relatively small. Experts claim that only five of those nine moons have a diameter that is bigger than 8 km.

The nine moons that are particularly far away also circle Jupiter in the opposite direction of its rotation. In contrast, the inner moons circle the planet in the same direction as its rotation. The newly discovered moons have the potential to serve as excellent targets for future missions that are scheduled to make flybys of Jupiter.

### UPI International Payments!



Image Credit : Canva

Users of PhonePe can now make payments using UPI in countries outside of India. PhonePe released a brand new feature that enables users to make payments using UPI in countries other than their own. According to PhonePe, UPI payments can be made to any international merchant in Singapore, the United Arab Emirates (UAE), Mauritius, Bhutan, or Nepal who has a local QR code. The company also has plans to expand its availability to additional countries in the not-too-distant future.

PhonePe users can activate UPI international at the merchant location as well. In addition, they could also do so via the app prior to their trip. The company says “the process is secure and will require the customer to submit their UPI pin in order to activate the service.” Indian banks will process payments in the recipient’s currency. Because of this, there is no longer a requirement for using foreign credit, debit, or currency exchange cards.

The new features may not be available on your device right away since it’s being released.

### Astronomers discover life 31 light years away!



Image Credit : Canva

Astronomers have discovered a planet that is roughly the same size as Earth. The planet also orbits its star at a distance that allows for it to be potentially habitable for life. This planet is located 31 light years away. Wolf 1069b is the name given to the recently discovered extrasolar planet. It is 1.36 times the mass of Earth.

Researchers say that they found a clear, low-amplitude signal from what seems to be a planet about the size of Earth. Also, Wolf 1069b only gets about 65% as much radiation from its star as Earth does from the Sun. Astronomers say their computer simulations reveal that 5% of emerging planetary systems surrounding low-mass stars like Wolf 1069 have a single visible planet.

Wolf 1069b's core is molten like Earth's. Thus it could be producing a magnetic field as a result. A temperature map that was simulated for Wolf 1069b shows that the region that is directly facing the star is the most likely place to find liquid water. With tech advances, experts hope to study 1069b's life potential.

### How can we use voice deepfakes?

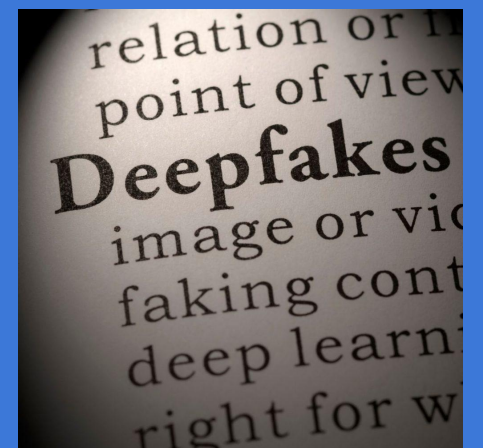


Image Credit : Canva

AI is the driving force behind voice deepfakes (Artificial Intelligence). According to those knowledgeable in the field of computing, they can be utilised to defraud users, carry out illegal activities online, or ruin the reputation of well-known individuals. A voice that has been produced to imitate the voice of a real person very precisely is referred to as a deepfake of that person's voice.

When using deepfake voices, it is more common for one person to imitate another without the permission of the original person. This is a significant problem that has the potential to have tremendously unfavourable effects in the future.

It is possible for the voice to replicate the intonation, accents, and other characteristics of the target individual's speech pattern in an accurate manner. People make use of artificial intelligence (AI) in conjunction with significant processing capacity to generate voice clones or synthetic voices. Anti-fraud technologies could be used to protect against the risks that come with these deepfakes.



# CURIOUS TIMES WEEKLY

Age Appropriate News

School News

Events and Achievements

## SCIENCE ENTHUSIASTS

### Google Gemini: Blurring AI, Human Lines

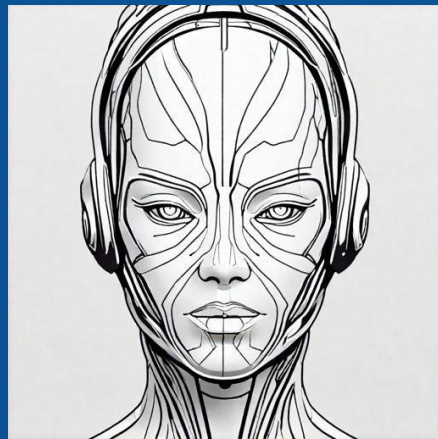


Image Credit : Hotpot.AI

"Google Gemini, a groundbreaking AI innovation, is set to transform Google's Bard chatbot and the Pixel 8 Pro smartphone. This advancement signifies a major leap in AI, enhancing performance and user experience. Gemini's launch is a testament to Google's commitment to leading AI development.

Key features of Gemini include its phased rollout, beginning with the Bard chatbot and Pixel 8 Pro. The technology enhances Bard's intuition and planning, and on the Pixel 8 Pro, it accelerates summarizing recordings and automates replies in apps like WhatsApp. A future Ultra model will further elevate Bard to an advanced version.

Google Gemini, initially supporting only English, is capable of multitasking across text, images, and videos. Its planned integration into Google Search highlights AI's role in improving search functions. DeepMind's involvement ensures superior problem-solving skills.

### Exploring Mercury Planet: Salty Glaciers Hint Habitability



Image Credit : Hotpot.AI

The news story unveils groundbreaking discoveries on Mercury, revealing salty glaciers near its north pole. This challenges previous perceptions of Mercury as a scorchingly hot planet. These glaciers, composed of salt and volatile compounds like water and carbon dioxide, suggest possible habitable zones beneath Mercury's harsh surface.

This insight comes from NASA's MESSENGER probe data, marking a significant advancement in planetary science. It suggests the potential for life in extreme environments beyond Earth, akin to Earth's Atacama Desert, where life thrives in salty conditions.

This discovery not only solves mysteries of Mercury's crater features but also expands the search for extraterrestrial life to planets similar to Mercury. It redefines our understanding of habitable zones in the solar system and opens new avenues in astrobiology, enhancing our knowledge of Mercury and the potential for life across the universe.

### Solar system's ring on the edge puzzles scientists!

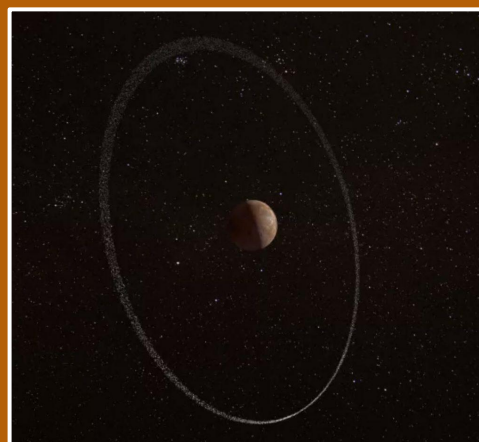


Image Credit : ESA

At the edge of the solar system, a new set of rings was found. Scientists can't figure out how it could be real, so they call it "impossible." Scientists have found that the icy dwarf planet Quaoar has a ring that goes around it. They didn't think it was possible, but the ring is a lot farther away from its main body than they thought.

The planet Quaoar is almost half the size of Pluto and can be found past Neptune, which is surrounded by the ring. It is the third ring to be found around a minor planet and the seventh ring system in the solar system. Nearly seven times the size of Quaoar is how far away the ring system is.

Even with a powerful telescope like the Hubble Space Telescope, the ring around Quaoar is too small and faint to see directly. Experts went on to say that the only way to find these dwarf planet rings would be to send a robot to go check them out. Scientists said after the discovery was announced that it shows "the amazing variety of things that are in our own cosmic backyard."

### Dolphins Sense Electricity, Researchers Reveal

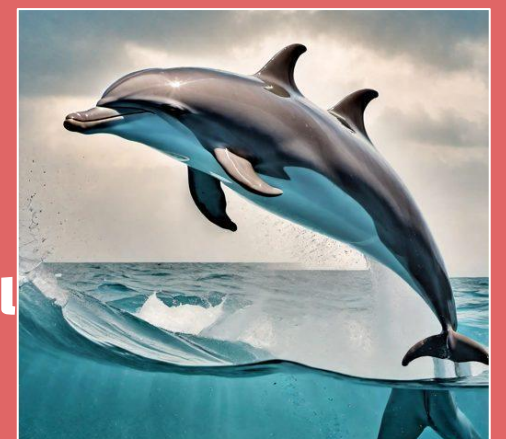


Image Credit : Canva

Dolphins, known for their intelligence and playfulness, have recently been found to possess electroreception, a skill allowing them to detect electric fields in water. This new finding enhances our comprehension of dolphins' interaction with their environment. They utilize areas on their snouts, previously whisker spots, to feel electric fields, similar to how bats use echolocation.

This ability assists in prey detection, especially under sand, akin to using a metal detector. Electroreception also contributes to their foraging methods, particularly in crater feeding, complementing echolocation for greater precision. Additionally, dolphins might navigate Earth's magnetic field using this skill, demonstrating their remarkable adaptation to aquatic life.

This discovery not only enriches our understanding of dolphins but also highlights their status as one of the ocean's most sophisticated mammals, capable of intricate interactions within their habitat.



# CURIOUS TIMES WEEKLY

Age Appropriate News

School News

Events and Achievements

## CULTURE & ENTERTAINMENT

### Inspiring Mumbai Museum Enchants Young Minds

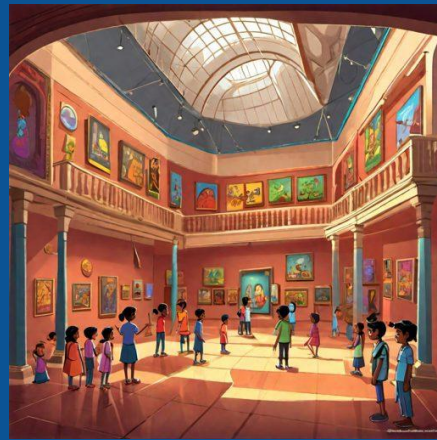


Image Credit : Hotpot.AI

At the Museum of Solutions (MuSo) in Mumbai, traditional schooling is reimagined. This unique space encourages children to learn through play and exploration, fostering creativity and innovative thinking. Founded by visionary Tanvi Jindal Shete, MuSo is a breeding ground for future problem solvers.

Tanvi, inspired by global museum visits, integrates diverse educational philosophies into MuSo's design. MuSo features engaging labs like the Play Lab, the Discover Lab, the Make Lab and Grow Lab. MuSo's impact extends beyond education; it nurtures young minds to become global changemakers. Its inclusive approach welcomes children from all backgrounds.

The Changemakers Council within MuSo empowers young leaders, equipping them with skills to envision a better future. MuSo is more than a museum; it's a catalyst for innovation and a garden nurturing the problem-solvers of tomorrow.

### Exploring Childhood: Ruskin Bond's Blue Umbrella

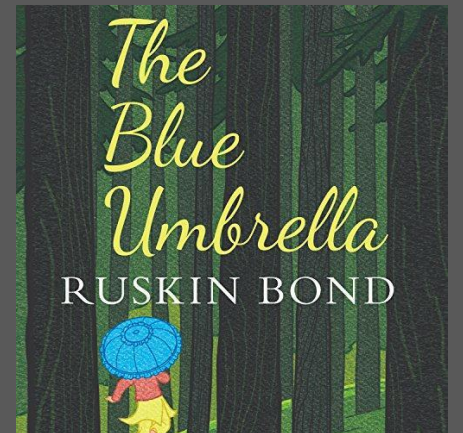


Image Credit : Wikimedia Commons

"The Magical Blue Umbrella" by Ruskin Bond is a heartwarming tale set in the verdant hills of Garhwal. The story unfolds around Binya, a dreamy young girl living a modest life with her family. Her mundane routine transforms into an enchanting adventure when she encounters city folks and their mesmerizing blue umbrella.

Captivated, Binya trades her treasured leopard claw pendant for this symbol of city elegance. The umbrella becomes a source of joy and pride in her village, but it also sparks deep envy in Ram Bharosa, a local shopkeeper. His obsession leads to a misguided theft plan, resulting in community backlash and his personal downfall. However,

Binya's act of forgiveness, returning the umbrella to Ram Bharosa, restores harmony and teaches a profound lesson in kindness and understanding. Ruskin Bond masterfully conveys that true value lies not in material possessions but in the joy and goodwill they bring. This narrative imparts a vital message about the power of kindness.

### Indian Street Eats: Fast Food Makeover

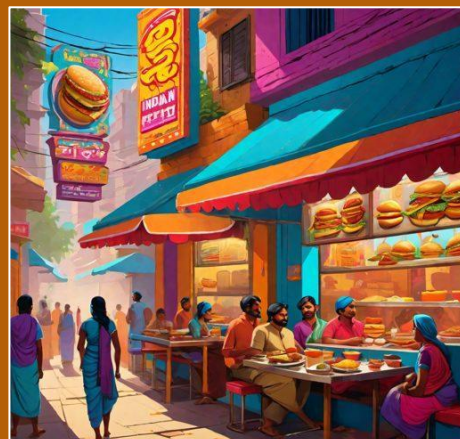


Image Credit : Hotpot.AI

"The Magic of Street Food" explores the vibrant world of Indian street food, showcasing a blend of tradition and innovation. In Delhi, the Odeon Shukla Paan Palace offers a unique 'fire paan', a betel leaf with a fiery twist, delighting customers. Social media stars like the Oreo pakoda and Fanta Maggi exemplify culinary creativity, turning simple ingredients into viral sensations. Traditional treats in Kolkata evolve, adding new ingredients to classic dishes.

Mumbai's Bhavesh creates artful, oversized sandwiches, combining traditional Indian flavors with unique twists. Food bloggers collaborate with vendors, creating visually appealing content that turns dishes into social media hits.

However, not all innovations are successful; in Kolkata, a vendor's rum-filled puchkas led to a shutdown, highlighting the need for responsible creativity. The article underscores the balance between preserving traditional flavors and embracing new trends.

### Fred Flintstone – Stone Age cartoon character!



Image Credit : Wikimedia Commons

Fred Flintstone, a classic animation icon from "The Flintstones," stands as a symbol of Stone Age nostalgia mixed with contemporary charm. His character, full of life and relatability, resonates across generations. The story delves into his appealing traits, family dynamics, hobbies, and enduring popularity. Fred's personality shines through his famous catchphrase "Yabba-Dabba-Doo!" and his emotional depth, balancing a kind nature with a quick temper.

As a family man, his relationships with wife Wilma, daughter Pebbles, and neighbors the Rubbles are pivotal. His appearance, marked by a spotted loincloth and blue necktie, along with hobbies like bowling and golf, add layers to his persona.

Pets Dino and Baby Puss enhance the show's whimsical Stone Age setting. Ultimately, Fred Flintstone captivates as a representation of a bygone era, his humor and style cementing his status in animation history.



# CURIOUS TIMES WEEKLY

Age Appropriate News

School News

Events and Achievements

## FEATURE CONTENT

### Himachal Spiti Valley: Mystique of Key Monastery

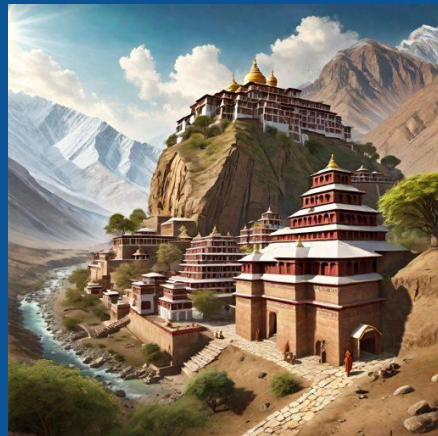


Image Credit : Canva

Imagine a remote, rugged valley in the Indian Himalayas, not your typical tourist hotspot but a journey into tranquility and enlightenment. Himachal Spiti Valley, a hidden gem, offers solitude in its pristine nature. The bus ride from Manali to Kaza is a visual feast, unveiling breathtaking landscapes. In Kaza, you encounter a unique culture with Tibetan influences and warm greetings.

Key Monastery, nestled away from the world, is a sanctuary of silence and wisdom. It's a self-contained universe with diverse monks, where lunch is a humble affair. Sattu, a local barley superfood, symbolizes their sustainable lifestyle.

As day turns to night, meditation takes center stage. Monks focus on a single point, fostering inner balance. Living here is a profound choice, cherished for its wisdom and gratitude. Himachal Spiti Valley and Key Monastery teach us to find inner peace and clarity amidst life's chaos, offering valuable life lessons.

### Himachal India Cafe Crawl: Top Spots



Image Credit : Canva

Explore the authentic flavors of Himachal, delving into its culinary heritage. Himachal's food isn't just sustenance; it's a window into its vibrant culture. From Shimla's historic Indian Coffee House to Himachali Rasoi's tribute to tradition, every bite narrates a tale. In Himachal, cuisine is an art, blending pumpkin and dry fruits into sweet symphonies and serving warm lassi as a twist on tradition.

Tabo showcases a fusion of Hindu, Buddhist, and Tibetan influences, while Spiti Valley Style pasta adds a modern touch to tradition. Manali elevates dining to new heights, literally, offering sky-high experiences. Café Patti honors local ingredients and methods in dishes like Himalayan garlic soup. Winterfield Café embodies resilience, born from the challenges of a pandemic.

In Himachal, every meal is a celebration, reflecting the resilience and diversity of its people. Savor the essence of this remarkable region through its cuisine.

### Discover Himachal India: Last Village Mystique

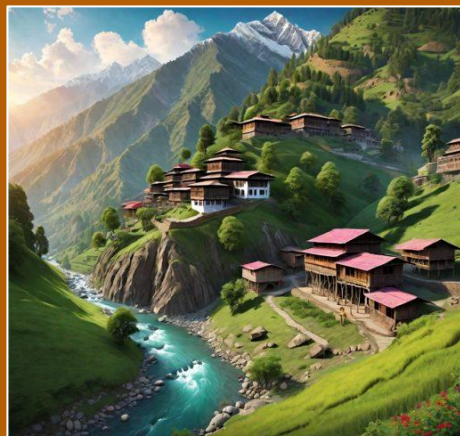


Image Credit : Canva

Nestled in Himachal Pradesh's Kinnaur district, Sangla Valley houses Chitkul, India's highest village at 11,000 feet. It boasts pristine air quality, 30 times better than Delhi, according to IIT Delhi research. Pine and Devdar trees enhance its natural beauty. Chitkul stands out with charming wooden houses, crafted to withstand harsh winters. These structures, made from local materials, include wooden huts, adding rustic charm to the village.

Chitkul transforms dramatically in winter, with heavy snowfall cutting off access. Residents migrate to lower-lying villages like Raksham Village, offering picturesque beauty with the Baspa River, sharp mountains, and lush fields.

Both Chitkul and Raksham emphasize living in harmony with nature, celebrating life's simplicity, and reconnection with nature's core. These villages inspire a deeper respect for their residents' extraordinary way of life.

### Skeleton Flower: Nature's Translucent Marvel



Image Credit : Canva

The Skeleton Flower, also known as *Diphylleia grayi*, is a mesmerizing plant with bone-white petals resembling a skeleton's structure. When raindrops touch its petals, they turn transparent, revealing intricate vein patterns.

This unique botanical wonder hails from mountainous regions in China, Japan, and the Appalachian Mountains, thriving in shady, moist environments under deciduous trees. It's hardy in USDA zones 4 to 9 and needs well-draining, organic-rich soil with a pH of 4.5 to 7.0.

As a deciduous perennial, it blooms from May to July and produces blue berries in early autumn before winter dormancy. Propagation is best done by dividing rhizomes, and care involves shade, regular watering, mulching, and winter protection. The Skeleton Flower enchants experienced gardeners and newcomers alike, symbolizing the magic of nature in your garden.



# CURIOUS TIMES WEEKLY

Age Appropriate News

School News

Events and Achievements

## MY EXPRESSIONS



### Come Explore a World in Miniature!

Miss Prashikha  
Delhi Public School Jankipuram  
Lucknow, Lucknow, Uttar Pradesh



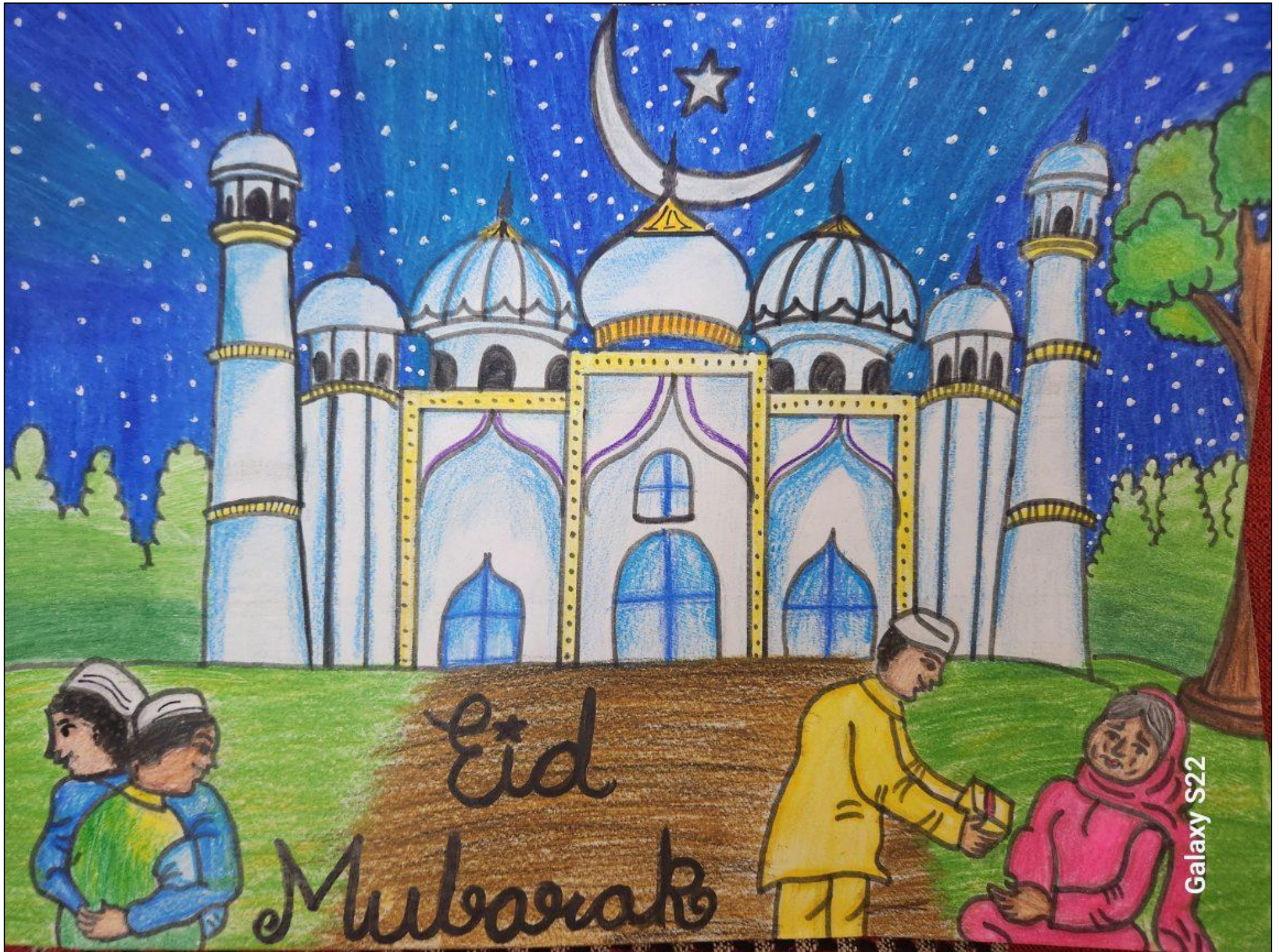
# CURIOUS TIMES WEEKLY

Age Appropriate News

School News

Events and Achievements

## MY EXPRESSIONS



### Eid Mubarak A Child's Tapestry of Eid!

Gauri Singhal  
Doon International School,  
Dehradun, Uttarakhand



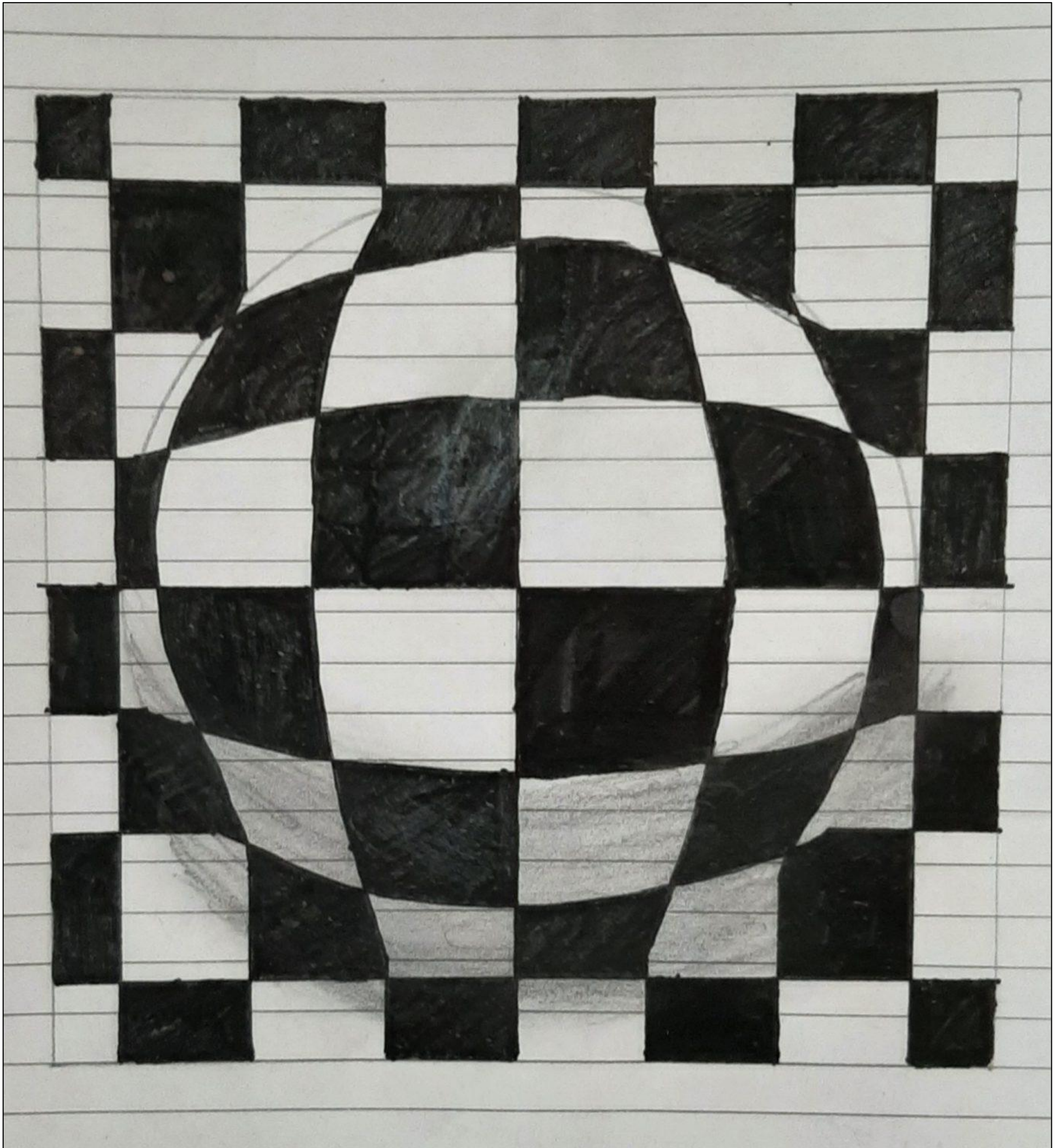
# CURIOUS TIMES WEEKLY

Age Appropriate News

School News

Events and Achievements

## MY EXPRESSIONS



### 3D Ball Drawing

Tanmay Jakhar  
Shalom Hills International  
School



# CURIOUS TIMES WEEKLY

Age Appropriate News

School News

Events and Achievements

## FUNTASTIC



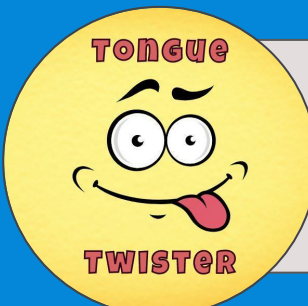
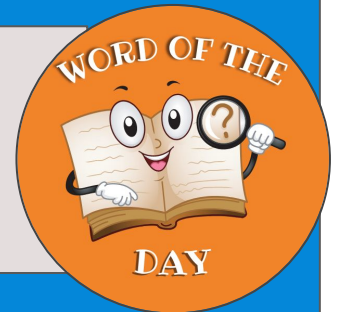
Q: What's a vampire's favorite fruit?

A: A blood orange!

Q: What kind of tree fits in your hand?

A: A palm tree!

Gusto  
Noun | gUH-stoh  
enjoyment and enthusiasm in doing something



Zara, the Gen Z zoomer, zealously zipped through the zigzagging zipline zone, zipping zany zigzags, while simultaneously Snapchatting selfies, streaming songs, and sipping on a Starbucks unicorn frappuccino, all while navigating the virtual world of cryptocurrency, TikTok trends, and viral VSCO filters, with zero zippers and zip ties to guide her. Zap!

Celebrate your journey, embrace change, and redefine success.  
The world is your canvas, and you're the artist of your own masterpiece.- Curious Times



### WORLD VIEW FOR CHILDREN

News that's Simple and Relatable



**STUDENTS PARTICIPATE NOW!**



# CURIOUS TIMES WEEKLY

Age Appropriate News

School News

Events and Achievements

## LEADING SCHOOLS ARE ON CURIOUS TIMES. JOIN NOW!



## ENJOY BENEFITS OF CURIOUS TIMES FOR SCHOOLS

**1. GET SCHOOL PAGE WITH BRANDING**



**2. LOGO DISPLAY ON STUDENTS' ENTRIES**



**3. PUBLISH YOUR SCHOOL NEWS**



**4. CUSTOMISED SCHOOL-BRANDED NEWSLETTER**



**5. EARLY ACCESS TO EVENTS & COMPETITIONS**



### Curious Times Annual Calendar

Check out the upcoming Events and Competitions

[READ MORE](#)

